



U 4.190

| Pos. | Ident No. | Description |
|------|--------------|---|
| □ | 549000 26400 | GASKET SET ¹⁾ |
| 1 | 000100 26400 | PUMP BODY |
| 3 | 020000 26400 | ROTOR |
| 5 | 900506 00000 | ROTOR VANE IN PLASTIC (3x) ²⁾ |
| 7 | 917611 00000 | BEARING SEALING WASHER |
| 8 | 911472 00000 | DISTANCE DISC |
| 9 | 906662 00000 | BEARING 6207 DIN 625 |
| 10 | 906574 00000 | SHAFT SEALING RING |
| 11 | 912821 00000 | CAP |
| 12 | 001100 26400 | BEARING COVER |
| 14 | 945319 00000 | SOCKET HEAD SCREW |
| 15 | 000800 26400 | LID WITH FLANGE |
| 16 | 000700 26400 | LID |
| 17 | 912871 00000 | LOCKING SCREW |
| 18 | 902108 00000 | COUPLING |
| 19 | 902210 00000 | COUPLING DISC |
| 21 | 945331 00000 | SOCKET HEAD SCREW |
| 22 | 948742 00000 | STRAIGHT PIN |
| 24 | 947733 00000 | KEY |
| 28 | 952008 00000 | LOCATING PEG |
| 30 | 502301 26400 | FAN |
| 31 | 947732 00000 | KEY |
| 32 | 945270 00000 | SHAFT END BOLD |
| 33 | 949409 00000 | WASHER |
| 41 | 537501 26400 | NON RETURN VALVE, ENTIRE |
| 46 | 008002 26400 | SIEVE |
| 47 | 945371 00000 | SOCKET HEAD SCREW |
| 49 | 951602 00000 | RING UNIT |
| 50 | 946969 00000 | STUD |
| 52 | 951228 02000 | LOCKING SCREW |
| 61 | 002403 26400 | HOUSING FOR OIL SEPARATION |
| 62 | 951221 00000 | LOCKING SCREW |
| 64 | 001702 26400 | OIL TANK COVER |
| 67 | 003701 26400 | COVER |
| 69 | 946968 00000 | STUD |
| 70 | 948507 00000 | SPRING WASHER |
| 71 | 947105 00000 | HEX.NUT |
| 74 | 305800 02000 | COUPLING NUT |
| 76 | 727501 99628 | BLOW OFF VALVE |
| 83 | 965415 00000 | OIL SEPARATION ELEMENT (2x) ²⁾ |
| 89 | 921500 50000 | HANDLE |
| 90 | 013300 26400 | METAL FILTER |
| 91 | 945318 00000 | SOCKET HEAD SCREW |
| 93 | 945226 00000 | HEX. HEAD SCREW |
| 94 | 867800 99559 | FLOAT |
| 95 | 003300 10700 | NOZZLE |
| 97 | 912300 00000 | CONNECTING SCREW |
| 101 | 506000 26400 | COARSE SEPARATOR |
| 104 | 008001 26400 | SIEVE |
| 112 | 003703 26400 | COVER |
| 119 | 907309 00000 | OIL SIGHT GLASS |
| 120 | 916800 10000 | COVER |
| 124 | 947104 00000 | HEX.NUT |
| 125 | 948504 00000 | SPRING WASHER |
| 126 | 951001 02000 | STUD |
| 128 | 951003 02000 | STUD |
| 130 | 945383 00000 | SOCKET HEAD SCREW |
| 131 | 945330 00000 | SOCKET HEAD SCREW |



U 4.190

| Pos. | Ident No. | Description |
|------|--------------|--|
| 132 | 945363 00000 | SOCKET HEAD SCREW |
| 133 | 945321 00000 | SOCKET HEAD SCREW |
| 134 | 945324 00000 | SOCKET HEAD SCREW |
| 135 | 951220 00000 | LOCKING SCREW |
| 141 | 012206 26400 | PIPE |
| 142 | 012207 26400 | PIPE |
| 143 | 012202 26400 | OIL RETURN PIPE |
| 148 | 948402 00000 | HOLLOW SCREW |
| 151 | 012203 26400 | OIL SUCTION PIPE |
| 152 | 009400 19000 | HOLLOW HOLDING SCREW |
| 154 | 012900 19000 | LOCKING SCREW |
| 156 | 912306 00000 | CONNECTING SCREW |
| 157 | 960201 26400 | COOLER |
| 159 | 012205 26400 | PIPE |
| 181 | 018301 26400 | PROTECTING HOOD |
| 183 | 902100 21900 | COUPLING MOTOR SIDE, Ø38MM (WB-MOT.) ³⁾ |
| 184 | 945237 00000 | HEX-HEAD SCREW |
| 185 | 947506 00000 | WASHER |
| 186 | 945349 00000 | SOCKET HEAD SCREW (WB-MOT.) ³⁾ |
| 187 | 568100 26400 | SUPPORT PILLAR |
| 188 | 949408 00000 | WASHER |
| 190 | 001800 20000 | SCREW |
| 193 | 949203 00000 | TOOTHED SPRING WASHER |
| 195 | 037900 26400 | INTERMEDIATE FLANGE (WB-MOT.) ³⁾ |
| 197 | 741302 00000 | RUBBER BUFFER |
| 198 | 945634 00000 | THREADED PIN |
| 218 | 902108 00000 | COUPLING MOTOR SIDE, Ø28MM |
| 233 | 537500 10700 | VALVE, ENTIRE |
| 282 | 741103 99682 | OIL LEVEL CONTROL - OPTIONAL |
| 313 | 902100 21300 | COUPLING MOTOR SIDE (US) |
| 314 | 945236 00000 | HEX-HEAD SCREW (US) |
| 316 | 037900 12900 | INTERMEDIATE FLANGE (US) |



¹⁾ Set of seals - 54900026400
- Pos.: 13, 25, 26, 37, 38, 44, 53, 63, 77, 79, 80, 118, 121, 129, 136, 149, 153

²⁾ necessary order quantity / maintenance

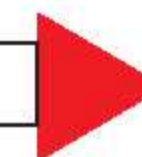
³⁾ Δ190-255V / Y330-440V 50Hz
Δ190-290V / Y330-500V 60Hz

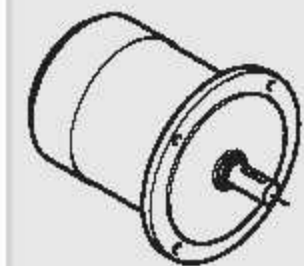
OPTIONAL

U 4.190 SA/K -51 Special design – with oil bath heating, level transmitter and heat valve
-54 Special design – with additional oil draining bore hole

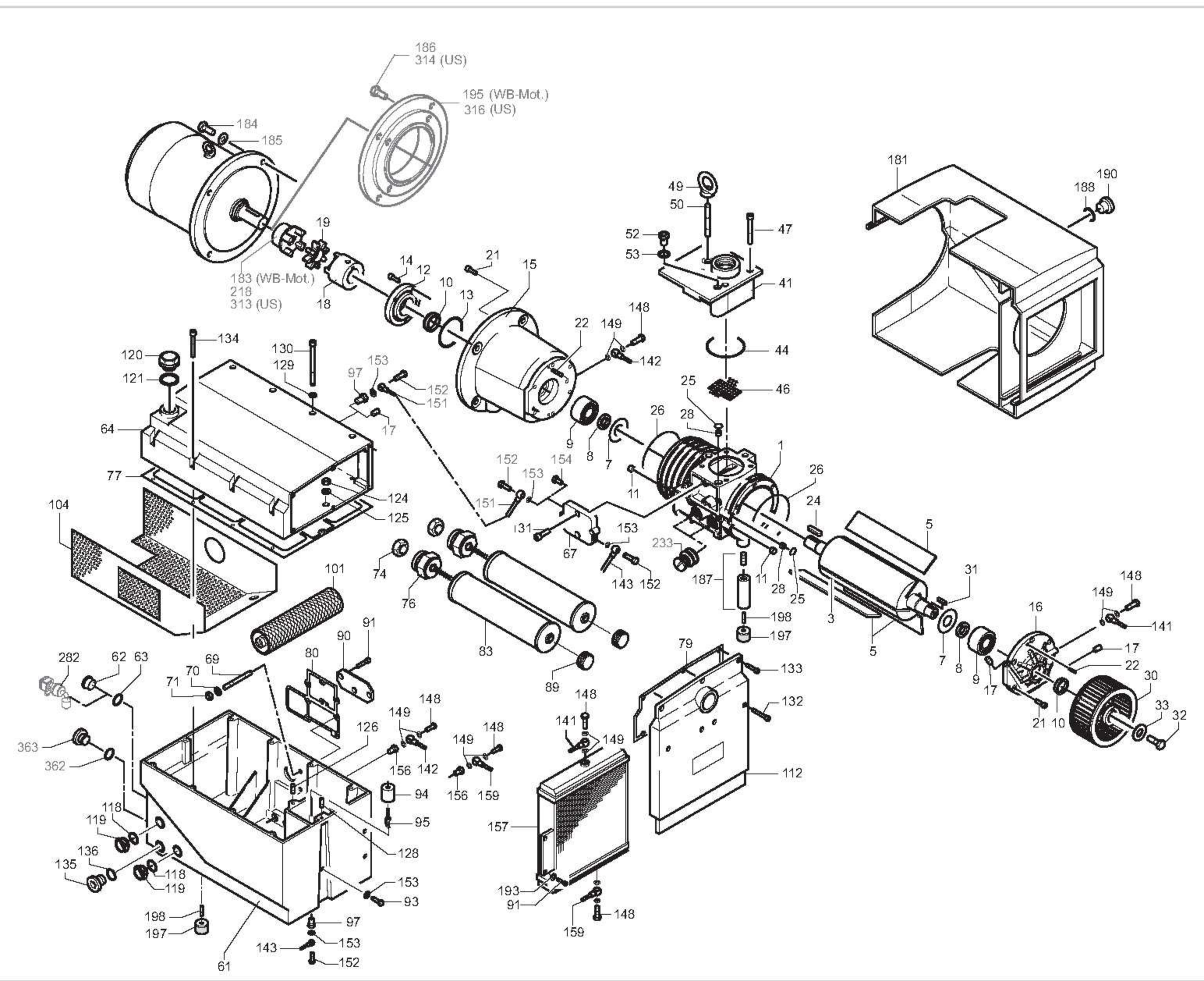
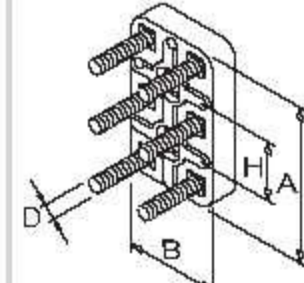
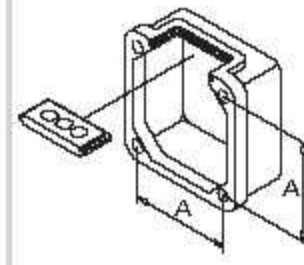
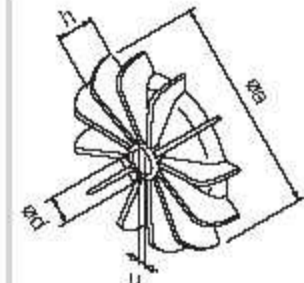
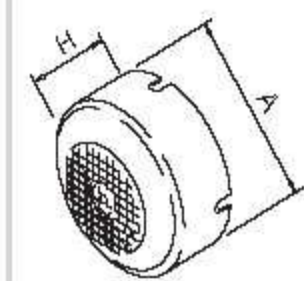
U 4.190 F/K -51 Special design – with oil bath heating, level transmitter and heat valve

Items different from standard appliance see appendix (back of drawing)







SERVICE
?
i



standard

U 4.190 F/K
U 4.190 SA/K

optional
en option
opcionale
opcional

| optional en option optionale opcional | Variante(n) Modifications Variantes | Pos |  |  | Bestell Nr. Ident No. No. Identification No. Identificazione No. De pedido | Beschreibung / Description / Designation / Designazione / Descripcion |
|---|---|---|---|---|--|---|
| U 4.190 SA/XX U 4.190 F/XX | U 4.190 SA/K - 51 U 4.190 F/K - 51 | 61 62 282 340 341 342 343 | X X X X X | X X | 741103 99682 002404 26400 960202 26400 943400 70000 948029 00000 | NIVEAUGEBER / LEVEL TRANSMITTER / CAPTEUR DE NIVEAU / INDICATORE DI LIVELLO / CODIFICADOR DE NIVEL ÖLABSCHEIDERGEHÄUSE / HOUSING FOR OIL SEPARATION / CARCASSE POUR SEPARATION D'HUILLE / CARCASSA SEPARATORE OLIO / CARCASA SEPARADORA DE ACEITE ROHRHEIZKÖRPER / PIPE HEATER / CORPS DE CHAUFFE / SCALDIGLIA / CALEFACTOR TUBULAR TEMPERATUR-WÄCHTER / THERMOSTAT / THERMOSTAT / INTERRUTTORE TERMICO / TERMOSTATO DICHRING / SEALING RING / JOINT / ANELLO / ANILLO |
| | U 4.190 SA/K - 54 | 61 361 362 363 | X X X X | X | 002405 26400 948013 00000 951220 00000 | ÖLABSCHEIDERGEHÄUSE / HOUSING FOR OIL SEPARATION / CARCASSE POUR SEPARATION D'HUILLE / CARCASSA SEPARATORE OLIO / CARCASA SEPARADORA DE ACEITE DICHRING / SEALING RING / JOINT / ANELLO / ANILLO VERSCHLUSSSCHRAUBE / LOCKING SCREW / BOUCHON / VITE DI CHIUSURA / TORNILLO DE CIERRE |


 standard