

E
Index

Pos.	Ident No.	Description
□	549000 26100	* COMPLETE SET OF SEALS
1	000101 26200	PUMP BODY
3	020000 26200	ROTOR
5	900512 00000	ROTOR VANE IN PLASTIC (3x)
7	917609 00000	GASKET
8	917501 00000	DISTANCE DISC
9	906622 00000	BEARING
10	906560 00000	SHAFT SEALING RING
12	912820 00000	CAP
15	000800 26200	SIDE SHIELD
16	000700 26200	SIDE SHIELD
17	912871 00000	LOCKING SCREW
18	902000 10600	COUPLING PUMP
21	945320 00000	HEX HEAD SCREW
22	948742 00000	GROOVED PIN
24	947732 00000	KEY
28	952008 00000	LOCATING PEG
29	951705 00000	SPRING DISC
30	902300 26200	FAN
31	947713 00000	KEY
32	901808 00000	SHAFT END BOLD
33	947507 00000	WASHER
34	028501 10700	VALVE BOLT
35	928600 70000	PRESSURE SPRING
36	033901 10700	VALVE PLATE
41	007800 26200	FLANGE
42	533900 26200	VALVE PLATE
44	005000 26200	SIEVE
46	948219 02000	LOCKING RING
49	928602 60000	PRESSURE SPRING
52	945325 00000	SOCKET HEAD SCREW
54	951602 00000	RING UNIT
55	945814 00000	THREADED PIN
57	951228 02000	LOCKING SCREW
63	509400 26200	HOLLOW HOLDING SCREW
64	001702 26200	OIL TANK COVER
67	003701 26200	COVER
69	951005 02000	STUD
70	948504 00000	SPRING WASHER
71	947104 00000	HEX.NUT
74	305800 02000	COUPLING NUT
76	727502 99628	BLOW-OFF VALVE
83	965416 00000	OIL SEPARATING ELEMENT (1x)
89	921500 50000	HANDLE
93	945226 00000	HEX. HEAD SCREW
94	867800 99559	FLOAT
97	012300 00000	CONNECTING SCREW
98	912871 00000	LOCKING SCREW
101	506000 26200	COARSE SEPARATOR
104	008001 26200	SCREEN
112	003703 26200	COVER
120	916800 10000	COVER
130	945387 00000	SOCKET HEAD SCREW
131	945319 00000	SOCKET HEAD SCREW
132	945323 00000	SOCKET HEAD SCREW
133	945319 00000	SOCKET HEAD SCREW
134	945324 00000	SOCKET HEAD SCREW
141	012211 26200	PIPE
143	012202 26200	PIPE
148	948401 00000	HOLLOW SCREW

**E**
Index

Pos.	Ident No.	Description
150	012209 26200	PIPE
151	012205 26200	PIPE
152	009400 19000	HOLLOW HOLDING SCREW
154	012900 19000	LOCKING SCREW
157	960202 26200	COOLER
158	012210 26200	PIPE
159	948402 00000	HOLLOW SCREW
181	018300 26200	COVERING HOOD
183	922400 60000	PROTECTIVE SHEET
186	568001 10700	INTERMEDIATE PIECE
187	568100 10700	SUPPORT PILLAR
188	949408 00000	WASHER
190	001800 20000	SCREW
192	945318 00000	SOCKET HEAD SCREW
193	949203 00000	TOOTHED SPRING WASHER
197	741310 60000	RUBBER BUFFER
214	950700 10000	CLAMP
215	946304 00000	HEX-HEAD SCREW
216	943400 90000	TEMPERATURE PROBE
242	902101 10600	COUPLING MOTOR SIDE Ø28MM
245	945117 00000	HEX-HEAD SCREW
246	948507 00000	SPRING WASHER
248	902200 10600	GEAR RIM
250	902100 26100	COUPLING MOTOR SIDE (US)
251	037900 26200	FLANGES (US)
254	945232 00000	HEX-HEAD SCREW (US)
282	741103 99683	OIL LEVEL CONTROL - OPTIONAL
301	002407 26200	OIL TANK
302	013301 26200	DEFLECTING PLATE
303	945211 00000	HEX-HEAD SCREW
304	951221 00100	LOCKING SCREW
306	907309 00000	OIL SIGHT GLASS
307	951220 00100	LOCKING SCREW
310	912300 00000	CONNECTING SCREW
311	912305 00000	CONNECTING SCREW
312	912306 00000	CONNECTING SCREW
314	003300 10700	NOZZLE
318	952005 00000	LOCATING PEG



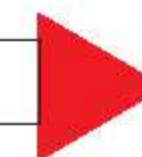
* Set of seals - 54900026100 - Pos.: 25, 26, 37, 38, 47, 58, 77, 79, 80, 121, 129, 149, 153, 160, 308

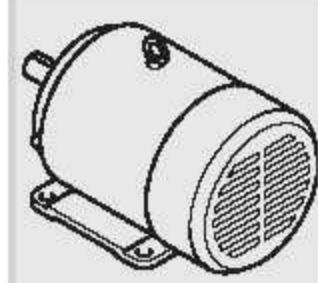
OPTIONAL

U 4.100 SA ** Special design – without cooling apparatus
U 4.100 SA/K - 25** Special design – with oil-to-water heat exchanger
U 4.100 SA/K - 51** Special design – with oil bath heating, level transmitter and heat valve
U 4.100 SA/K - 54** Special design – with additional oil draining bore hole

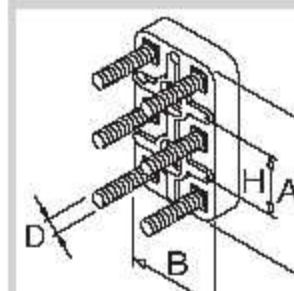
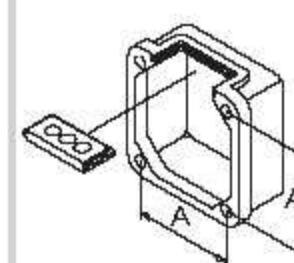
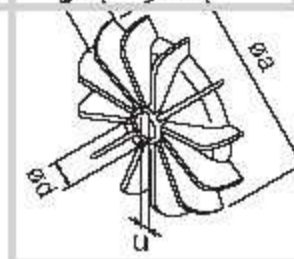
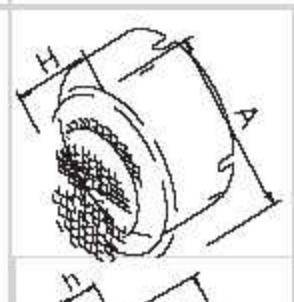
U 4.100 F ** Special design – without cooling apparatus
U 4.100 F/K - 25** Special design – with oil-to-water heat exchanger
U 4.100 F/K - 51** Special design – with oil bath heating, level transmitter and heat valve

** Items different from standard appliance see appendix (back of drawing)



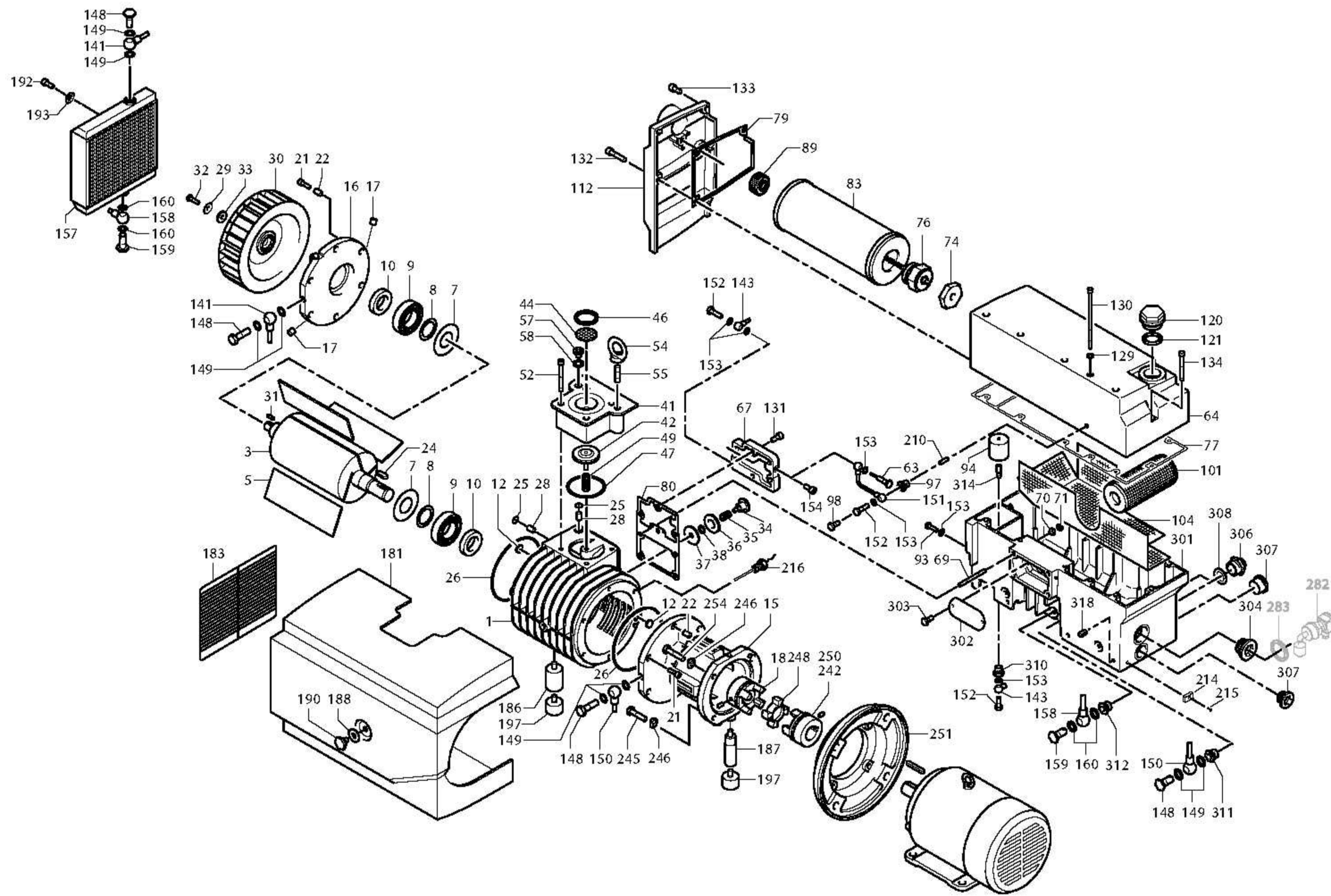
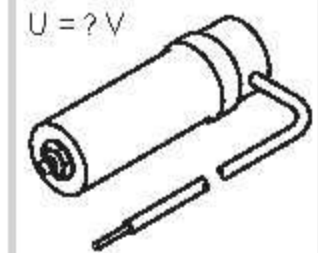


SERVICE ?



1~

C = ? μ F
U = ? V





standard

U 4.100 F/K

U 4.100 SA/K

optional
en option
opcionale
opcional

optional en option optionale opcional	Variante(n) Modifications Variantes	Pos			Bestell Nr. Ident No. No. Identification No. Identificazione No. De pedido	Beschreibung / Description / Designation / Designazione / Desripcion
U 4.100 SA U 4.100 SA/K - 25 U 4.100 SA/K - 51 U 4.100 SA/K - 54 U 4.100 F U 4.100 F/K - 25 U 4.100 F/K - 51	U 4.100 SA U 4.100 F	141 144 157 158 159 160 192 193 307 311 312	X	X X X X X X X X X X	012203 26200 912305 00000	LEITUNG / PIPE / TUYAU / CONDOTTO / CONDUCTO VERSCHLUSSSCHRAUBE / LOCKING SCREW / BOUCHON / VITE DI CHIUSURA / TORNILLO DE CIERRE
	U 4.100 SA/K - 25 U 4.100 F/K - 25	29 30 31 32 33 98 141 150 155 157 158 181 192 193 197 198 211	X X X X X X X X X X X X X X X	X X X X X X X X X X X X X X X X	912871 00000 012214 26200 012213 26200 948420 00000 960204 26200 012212 26200 018301 26200 741302 00000 945634 00000 967300 10000	VERSCHLUSSSCHRAUBE / LOCKING SCREW / BOUCHON / VITE DI CHIUSURA / TORNILLO DE CIERRE LEITUNG / PIPE / TUYAU / CONDOTTO / CONDUCTO LEITUNG / PIPE / TUYAU / CONDOTTO / CONDUCTO HOHLSCHRAUBE / HOLLOW SCREW / VIS CREUSE / VITE ESAGONALE / TORNILLO HUECO KUEHLER / COOLER / REFROIDISSEUR / RAFFREDDATORE / REFRIGERADOR LEITUNG / PIPE / TUYAU / CONDOTTO / CONDUCTO HAUBE / PROTECTING HOOD / CARTER PROTECTEUR / CARTER DI PROTEZIONE / SOMBRERETE GUMMIPUFFER / RUBBER BUFFER / AMORTISSEUR EN CAOUTCHOUC / AMMORTIZZATORE IN GOMMA / AMORTIGUADOR DE GOMA GEWINDESTIFT / THREADED PIN / GOUPILLE FILETEE / SPINA FILETTATURA / VARILLA ROSCADA L-VERSCHRAUBUNG / L-PIECE / L-PIECE / PEZZO A L / ATORNILLADURA
U 4.100 SA/K - 51 U 4.100 F/K - 51	301 304 309 315 316 317 319 320	X X X X X X X	X X X	002409 26200 912314 00000 960203 26200 943400 70000 741103 99682 948086 00000 948029 00000	ÖLABSCHEIDERGEHÄUSE / HOUSING FOR OIL SEPARATION / CARCASSE POUR SEPARATION D'HUILLE / CARCASSA SEPARATORE OLIO / CARCASA SEPARADORA DE ACEITE ANSCHLUSSSCHRAUBE / CONNECTION SCREW / VIS DE RACCORDEMENT / VITE DI RACCORDO / TORNILLO DE EMPALME ROHRHEIZKÖRPER / PIPE HEATER / CORPS DE CHAUFFE / SCALDIGLIA / CALEFACTOR TUBULAR TEMPERATUR-WÄCHTER / THERMOSTAT / THERMOSTAT / INTERRUPTORE TERMICO / TERMOSTATO NIVEAUGEBER / LEVEL TRANSMITTER / CAPTEUR DE NIVEAU / INDICATORE DI LIVELLO / CODIFICADOR DE NIVEL DICHTUNG / GASKET / JOINT / GUARNIZIONI / ANILLO KUPFERRING / SEALING RING / JOINT / ANNELLO / ANILLO DE COBRE	
U 4.100 SA/K - 54	301 307	X X	X X	002408 26200 951220 00100	ÖLABSCHEIDERGEHÄUSE / HOUSING FOR OIL SEPARATION / CARCASSE POUR SEPARATION D'HUILLE / CARCASSA SEPARATORE OLIO / CARCASA SEPARADORA DE ACEITE VERSCHLUSSSCHRAUBE / LOCKING SCREW / BOUCHON / VITE DI CHIUSURA / TORNILLO DE CIERRE	


 standard