

| Index | Pos. | Ident No.    | Description                            |
|-------|------|--------------|--|
|       | □    | 549000 22500 | <b>GASKET SET</b> <sup>1)</sup>        |
|       | 1    | 000100 22500 | PUMP BODY                              |
|       | 5    | 020000 22500 | ROTOR                                  |
|       | 7    | 901373 01000 | <b>ROTOR VANES (10x)</b> <sup>2)</sup> |
|       | 9    | 947814 00000 | KEY                                    |
|       | 10   | 000700 22500 | LID                                    |
|       | 11   | 000800 22500 | LID                                    |
|       | 12   | 001100 22500 | BEARING COVER                          |
|       | 13   | 001000 22500 | BEARING COVER                          |
|       | 14   | 001101 22500 | BEARING COVER                          |
|       | 15   | 945322 00000 | SOCKET HEAD SCREW                      |
|       | 16   | 945319 00000 | SOCKET HEAD SCREW                      |
|       | 17   | 945230 00000 | HEX-HEAD SCREW                         |
|       | 18   | 948743 00000 | GROOVED PIN                            |
|       | 21   | 068900 22500 | GREASE DISTRIBUTION WASHER             |
|       | 22   | 945270 00000 | SHAFT END BOLD                         |
|       | 23   | 968001 60000 | DISTANCE DISC                          |
|       | 24   | 906614 00000 | BEARING                                |
|       | 25   | 906636 00000 | BALL BEARING                           |
|       | 26   | 913112 50100 | O-RING                                 |
|       | 27   | 911450 00000 | DISTANCE DISC 45X55X0,025              |
|       | 28   | 911451 00000 | DISTANCE DISC 45X55X0,05               |
|       | 29   | 911413 60000 | DISTANCE DISC 65X85X0,025              |
|       | 30   | 911413 70000 | DISTANCE DISC 65X85X0,05               |
|       | 31   | 917162 00000 | COMPENSATING DISC                      |
|       | 32   | 948265 00000 | LOCKING RING                           |
|       | 34   | 906580 00000 | SHAFT SEALING RING                     |
|       | 35   | 911326 00000 | SEAL                                   |
|       | 37   | 008100 22200 | CONDUIT-GREASE                         |
|       | 38   | 949001 00000 | GREASE NIPPLE                          |
|       | 40   | 003100 22500 | GASKET                                 |
|       | 41   | 520800 22500 | PROTECTIVE HOOD                        |
|       | 47   | 009600 10100 | DOMPENER                               |
|       | 48   | 945333 00000 | SOCKET HEAD SCREW                      |
|       | 50   | 068000 22500 | SPACING COLLAR                         |
|       | 54   | 015100 22500 | FOOT                                   |
|       | 57   | 945382 00000 | SOCKET HEAD SCREW                      |
|       | 58   | 948804 00000 | RING SCREW                             |
|       | 61   | 560200 22500 | CONNECTION FLANGE                      |
|       | 67   | 945361 00000 | SOCKET HEAD SCREW                      |
|       | 68   | 947507 00000 | WASHER                                 |
|       | 70   | 544500 22500 | COUPLING WITH FAN                      |
|       | 81   | 040101 22500 | FILTER HOUSING                         |
|       | 85   | 007800 22500 | CONNECTION FLANGE                      |
|       | 88   | 945336 00000 | SOCKET HEAD SCREW                      |
|       | 89   | 007900 22500 | GASKET                                 |
|       | 92   | 945362 00000 | SOCKET HEAD SCREW                      |
|       | 94   | 003000 22500 | GASKET                                 |
|       | 95   | 040201 22500 | FILTER COVER                           |
|       | 96   | 945338 00000 | SOCKET HEAD SCREW                      |



DTLF / VTLF 400-500

| Index | Pos. | Ident No.    | Description                                       |
|-------|------|--------------|---|
|       | 97   | 950308 00000 | WASHER  |
|       | 102  | 040100 22500 | FILTER HOUSING                                    |
|       | 106  | 945330 00000 | SOCKET HEAD SCREW                                 |
|       | 107  | 005600 22500 | COVER   |
|       | 110  | 945373 00000 | SOCKET HEAD SCREW                                 |
|       | 118  | 909540 00000 | <b>FILTER CARTRIDGE C18133 (1x)</b> <sup>2)</sup> |
|       | 119  | 008900 22500 | GASKET  |
|       | 120  | 040200 22500 | FILTER COVER                                      |
|       | 123  | 009000 27000 | LEAF SPRING                                       |
|       | 164  | 002100 22500 | COUPLING MOTOR SIDE, Ø48MM                        |
|       | 164  | 002101 22500 | COUPLING MOTOR SIDE, Ø55MM                        |
|       | 164  | 002102 22500 | COUPLING MOTOR SIDE, Ø60MM                        |
|       | 170  | 946114 00000 | THREADED PIN                                      |
|       | 173  | 902230 00000 | COUPLING DISC                                     |
|       | 187  | 500900 22500 | MOTOR FLANGE, B5/350                              |
|       | 187  | 500901 22500 | MOTOR FLANGE, B5/400                              |
|       | 187  | 500902 22500 | MOTOR FLANGE, B5/450                              |
|       | 201  | 947109 00000 | HEX. NUT  |
|       | 203  | 946962 00000 | STUD  |
|       | 204  | 947509 00000 | WASHER  |
|       | 221  | 741341 00000 | RUBBER BUFFER                                     |
|       | 222  | 946961 00000 | STUD  |
|       | 223  | 945241 00000 | HEX. HEAD SCREW                                   |
|       | 421  | 533700 99620 | PRESSURE RELIEVE VALVE, 1-1.7BAR                  |
|       | 421  | 533702 99620 | BLOW-OFF VALVE, 0.15BAR                           |
|       | 421  | 533703 99620 | PRESSURE RELIEVE VALVE, <1BAR                     |
|       | 425  | 533701 99620 | VACUUM RELIEF VALVE                               |
|       | 442  | 007400 22500 | SILENCER HOUSING                                  |
|       | 444  | 945384 00000 | SOCKET HEAD SCREW, M8X190                         |
|       | 448  | 945346 00000 | SOCKET HEAD SCREW, M8X140                         |
|       | 451  | 007601 16900 | SIEVE-TUBE  |
|       | 452  | 907700 90000 | SILENCER SPONGE                                   |
|       | 453  | 007501 16600 | GASKET  |
|       | 454  | 007800 16600 | CONNECTING FLANGE                                 |
|       | 455  | 945320 00000 | SOCKET HEAD SCREW                                 |



DTLF / VTLF 400-500

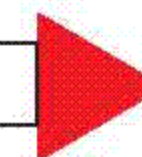
<sup>1)</sup> Set of seals - 54900022500 - Pos.: 38, 89, 94, 119, 120, 130

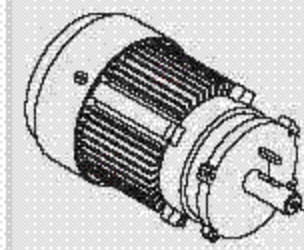
<sup>2)</sup> necessary order quantity / maintenance

OPTIONAL

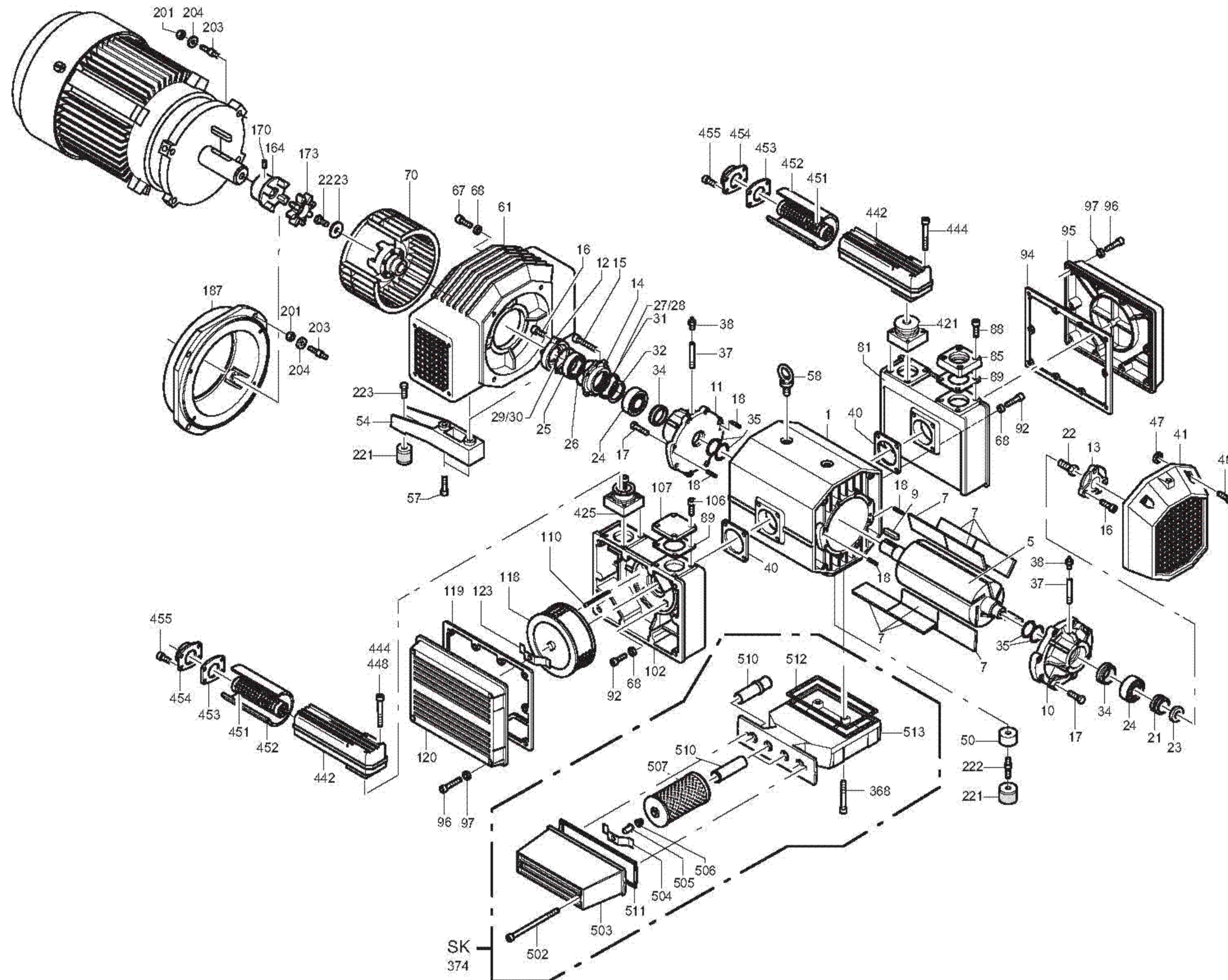
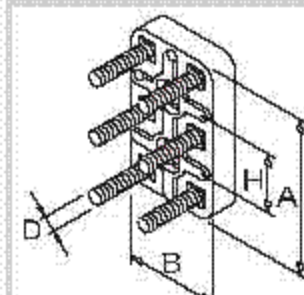
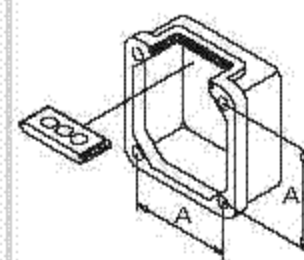
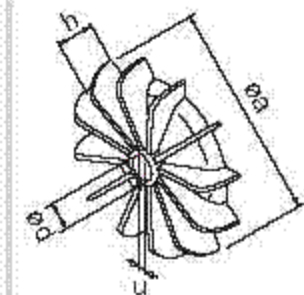
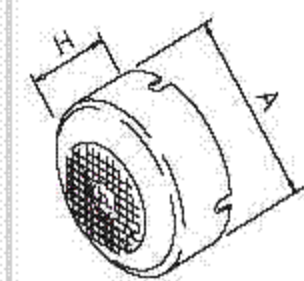
|          |    |                                |
|----------|----|--------------------------------|
| VTLF 400 | SK | Special design – extra cooling |
| VTLF 500 | SK | “ “ “ “                        |

Items different from standard appliance see appendix (back of drawing)





SERVICE ?



standard

DTLF 400  
DTLF 500

VTFL 400  
VTFL 500

optional   
en option  
opcionale  
opcional